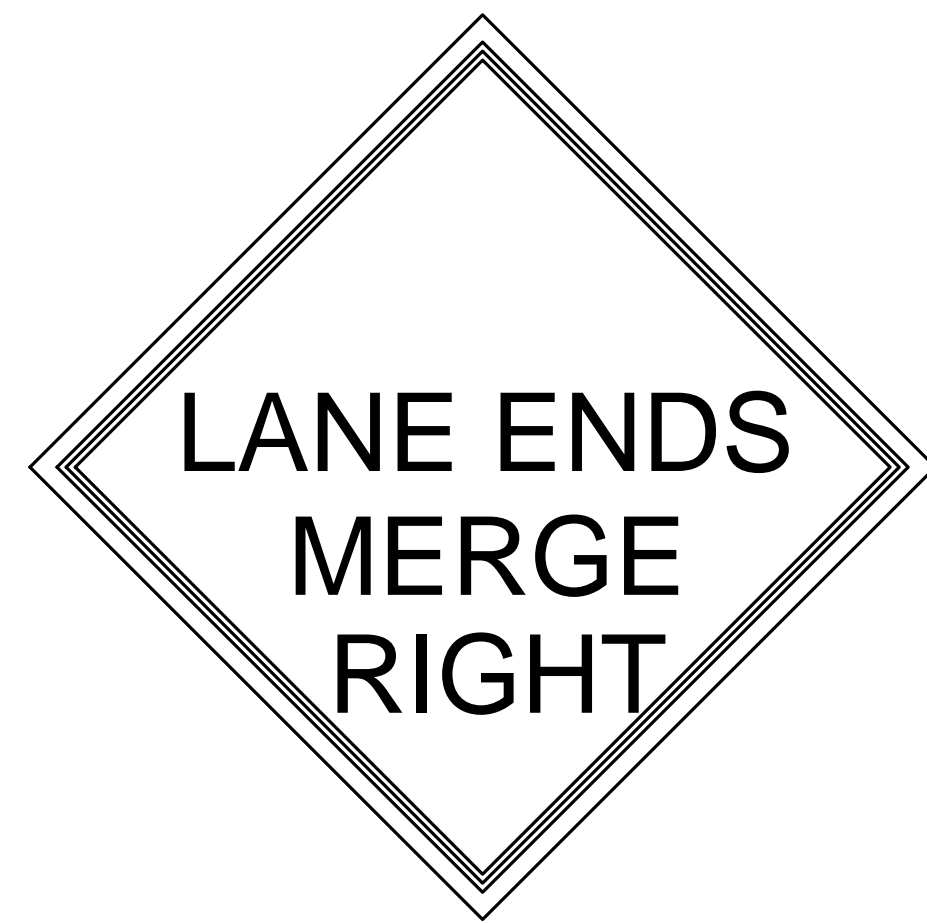
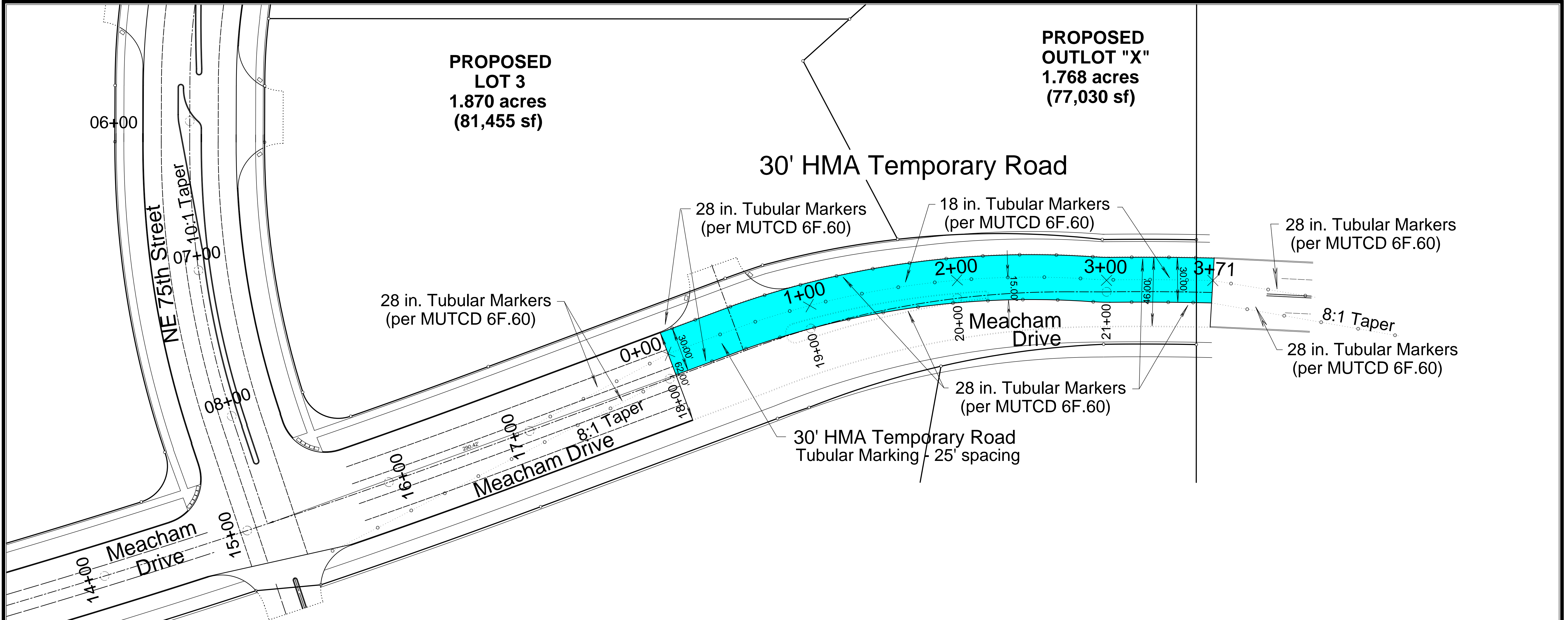


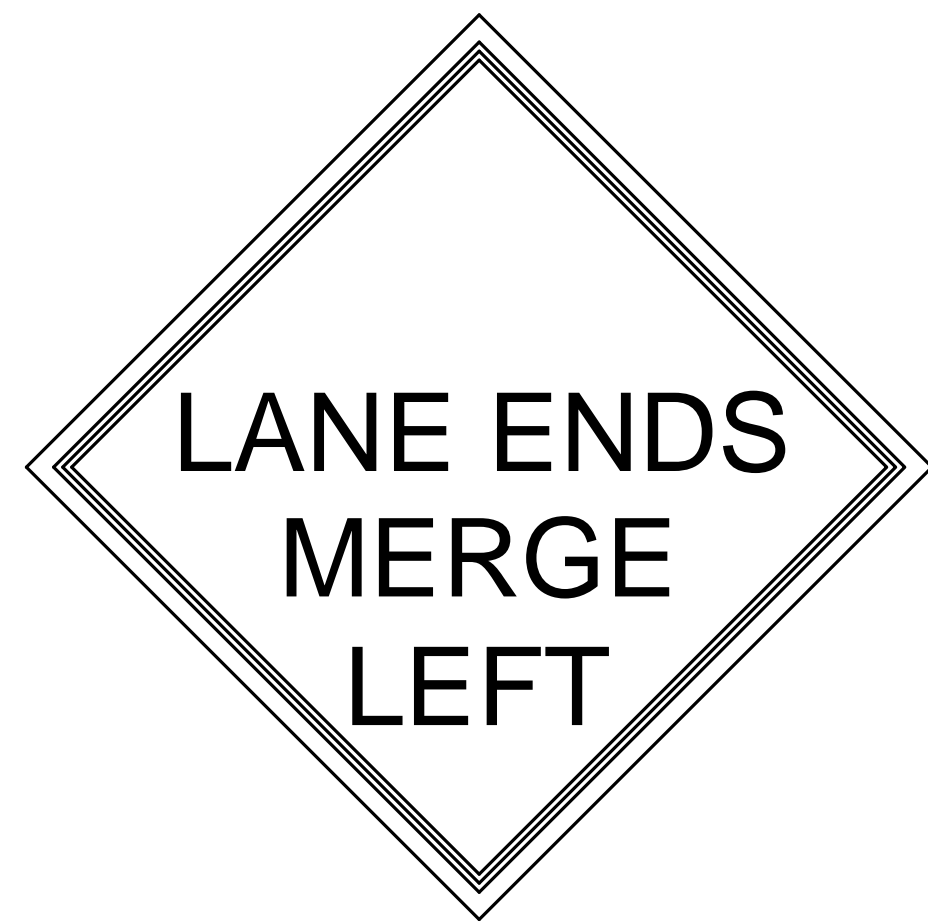
**PROPOSED
LOT 3
1.870 acres
(81,455 sf)**

**PROPOSED
OUTLOT "X"
1.768 acres
(77,030 sf)**

30' HMA Temporary Road

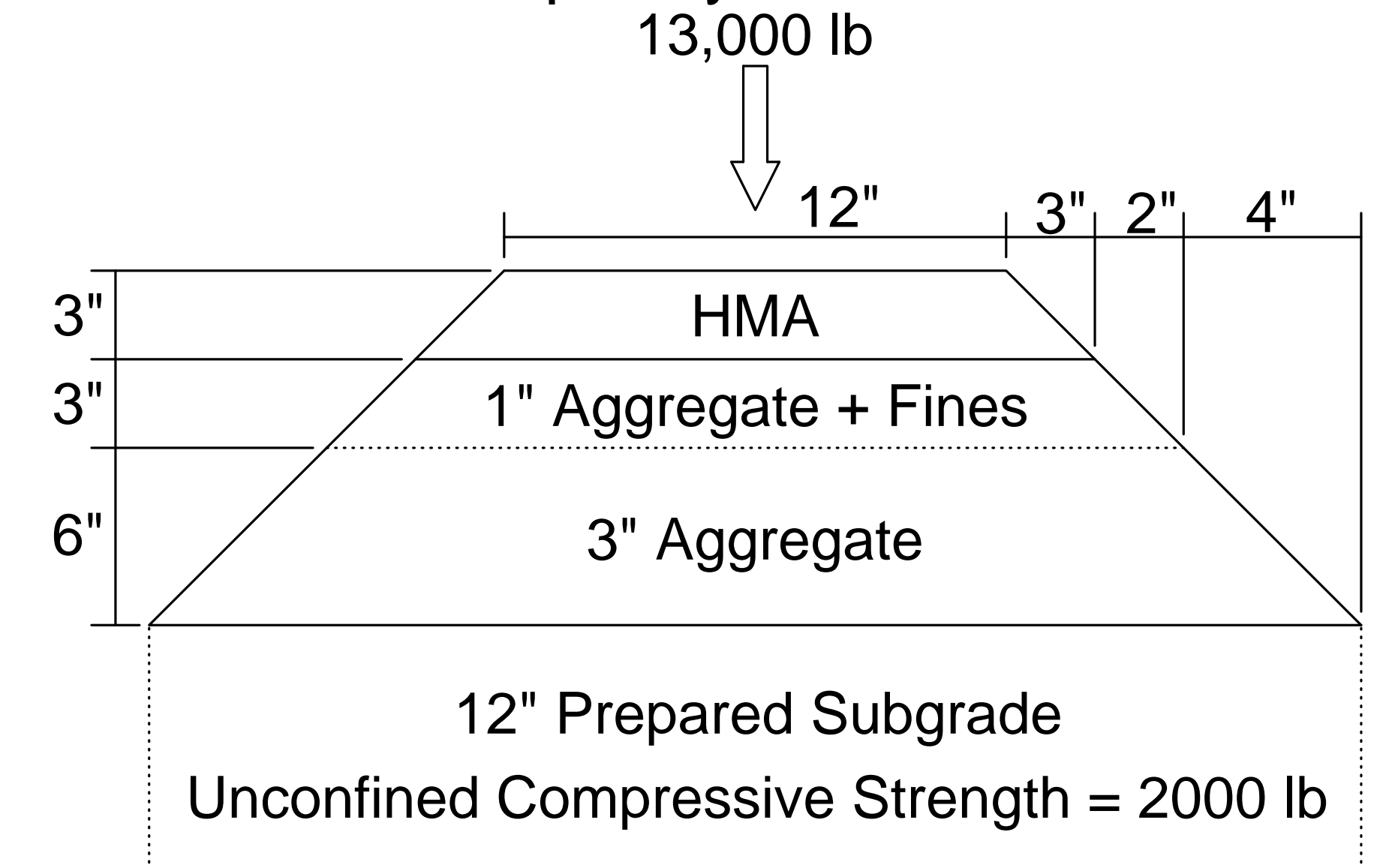


M9-2R



M9-2L

Temporary Road Detail



EXISTING UTILITIES NOTE:
THE LOCATIONS OF THE EXISTING UTILITIES SHOWN HEREON ARE APPROXIMATE. THEY HAVE BEEN PLOTTED FROM AVAILABLE SURVEYS AND/OR RECORDS. THE CONTRACTOR IS RESPONSIBLE TO ENSURE THAT ANY EXISTING UTILITIES (SHOWN OR NOT SHOWN) ARE NOT DAMAGED DURING CONSTRUCTION. IOWA ONE-CALL (1-800-292-6869).

DISCLAIMER:
THIS DRAWING IS BEING MADE AVAILABLE BY A. LEO PELDS ENGINEERING COMPANY (A.L.P.E.C.) FOR USE ON THIS PROJECT IN ACCORDANCE WITH A.L.P.E.C.'S AGREEMENT FOR PROFESSIONAL SERVICES. A.L.P.E.C. ASSUMES NO RESPONSIBILITY OR LIABILITY (CONSEQUENTIAL OR OTHERWISE) FOR ANY USE OF THESE DRAWINGS (OR ANY PART THEREOF) EXCEPT IN ACCORDANCE WITH THE TERMS OF SAID AGREEMENT.

LEGEND:

STANDARD SYMBOLS:

- IRON ROD OR PIPE FOUND
- CALCULATED CORNER
- △ SECT. COR. MONUMENT FOUND
- △ SECT. COR. MONUMENT CALC.
- ⊕ POWER POLE
- ⊕ LIGHT POLE
- F.F. FINISHED FLOOR

- +/-
- xxx
-
-
-
- 125.3
- N.T.S.
- H.M.A.

- MORE OR LESS
- FENCE LINE
- FIRE HYDRANT
- SANITARY SEWER MANHOLE
- STORM SEWER MANHOLE
- VALVE
- SPOT ELEVATION (@ x)
- NOT TO SCALE
- HOT MIX ASPHALT

- P.C.C. PORTLAND CEMENT CONCRETE
- xxx UTILITY LINE OR PIPE
- W WATER
- G GAS
- S SANITARY SEWER
- ST STORM SEWER
- UG/E/T UNDERGROUND ELEC. / TEL.
- OHE/T OVERHEAD ELEC. / TEL.
- CATV CABLE TELEVISION

**TEMPORARY ASPHALT DETAIL
SPRING CREEK
PLEASANT HILL, IOWA**

IP SET IN MEDIAN NE UNIV AVE @ MAILBOX 7504	DATE	DESIGNED BY	DRAWN BY
1/2" OF S EDGE OF VB PAVING, 3" E REFLECTOR POLE ELEVATION @ 901.90'	10-09-2009	E. JONDLE	10862